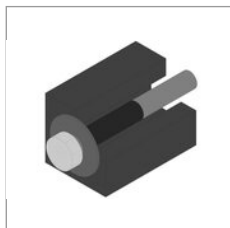


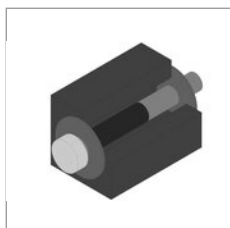


INSTALLATION



1
Insert pipe with special coating and fixed flange

2
Glue the fixed flange to the inside of the wall with a suitable sealing adhesive (Beko Tackcon) and allow to harden

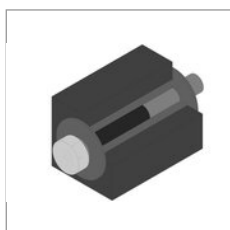


3
Push the loose flange with the hole at position 12 o'clock against the outside of the wall. Also glue to the wall with a suitable sealing adhesive (Beko Tackcon) and allow to harden

4
Inject expansion resin (e.g.: Tangit M3000) over the hole in the loose flange & allow to harden

5
Remove the sealing caps

6
Feed the cable from the inside or outside through the single-gang house entry until the desired cable protrusion in the building is reached



WARNING

Drill holes can be customized to customer requirements

NOTE

Delivery unit:

Tube with special coating & fixed flange; large and small sealing cap; rubber seal; rubber support; screw attachment; loose flange with hole