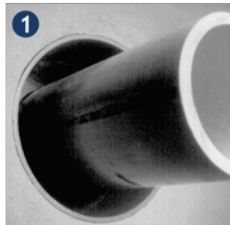




INSTALLATION



1
Center the pipe, cable or conduit in wall opening or casing. Carrier pipes must be suitable, dimensionally stable and without damage in the sealing area. Make sure the pipe is adequately supported on both ends. The LINK-SEAL® can only perform a sealing function and does not serve as a pipe support or fixed point. All building and pipeline guidelines are to be observed



2
Use only in suitable wall sleeves, installation tolerances according to dimensions in the calculation program. The specified clamping ranges must be observed here. This also applies to the dimensions of the carrier pipes. With suitable sealing surface in the inner wall and suitable rigidity (dimensional stability after installation) of the wall sleeve. Loosen rear pressure plate with nut just enough so links move freely towards and away from each other connect both ends of belt.



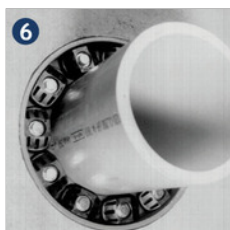
3
Check to be sure bolt heads are facing the installer. Extra slack or sag is normal. Do not remove links if extra slack exists. Note: On smaller diameter pipes, links may need to be stretched.



4
Slide belt assembly into annular space. For larger size belts, start inserting LINK-SEAL® modular seal assembly at the 6 o'clock position and work both sides up toward the 12 o'clock position in the annular space.



5
Slide belt assembly into annular space. For larger size belts, start inserting LINK-SEAL® modular seal assembly at the 6 o'clock position and work both sides up toward the 12 o'clock position in the annular space. Do not tighten any bolt more than 4 turns at a time. Continue in a clockwise manner. Make 2 or 3 more passes at 3 turns per bolt until links have been uniformly compressed and the max. torque moment (see table) is reached.



6
Repeat tightening after approx. 2 hours. Especially for LINK-SEAL® Type LS 500 up to LS 700 it might be necessary (depending on the installation conditions such as annular space, temperature, etc.) to tighten again for several times.