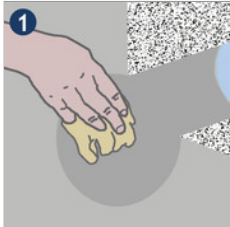




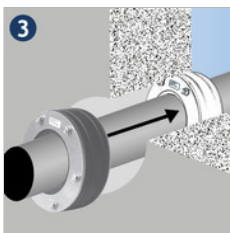
INSTALLATION



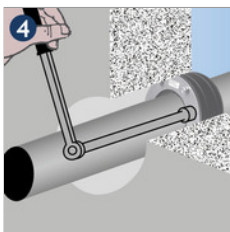
1
Clean casing pipe/core drilling and carrier pipe. Carrier pipes must be suitable, dimensionally stable and without damage in the sealing area. Core drillings have to be made true to scale and with a smooth inner side.



2
We recommend coating core drillings with ProteX epoxy resin in order to protect the concrete and smoothen possible cavities/grooves.



3
Verify the casing pipe/core drilling and carrier pipe diameters based on the sealing kit data. Insert the Kompakt seal into the casing pipe or core drilling flush with the wall and insert the carrier pipe. Care must be taken to ensure the sealing insert is mounted on the outside of the building (tolerance for the carrier pipes).



4
In doing so, the nuts should preferably point to the inside in order to be accessible for subsequent tightening. The Kompakt seal split version is available for subsequent mounting. Tighten the nuts a few turns clockwise. Repeat this procedure two or three times, but not beyond the maximum torque (see table below). Tighten again after half an hour!

NOTE

To peel off the onion rings, push the rings backward by hand or with a screwdriver (Fig. 1/2) and cut into the skin with a sharp knife (Fig. 3). Afterwards pull off the ring by hand (Fig. 4). Until the appropriate size is reached.

| Nuts | Max. Torque | Torque for thin-walled plastic pipes | WR Super Soft | KTW |
|------|--|---|---------------|-------|
| M 6 | 5 Nm | 5 Nm | 3 Nm | 8 Nm |
| M 8 | 17 Nm for standard seal 20 Nm for standard seal | 8 Nm for standard seal 15 Nm for standard seal | 5 Nm | 12 Nm |
| M 10 | 30 Nm | 22 Nm | - | 25 Nm |
| M 12 | 35 Nm | 25 Nm | - | 30 Nm |

| Nuts | Max. Torque | Torque for thin-walled plastic pipes | WR Super Soft | KTW |
|------|--|---|---------------|-------|
| M 6 | 5 Nm | 5 Nm | 3 Nm | 8 Nm |
| M 8 | 17 Nm for standard seal 20 Nm for standard seal | 8 Nm for standard seal 15 Nm for standard seal | 5 Nm | 12 Nm |
| M 10 | 30 Nm | 22 Nm | - | 25 Nm |
| M 12 | 35 Nm | 25 Nm | - | 30 Nm |

