



## INSTALLATION

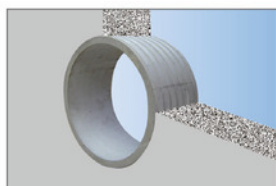
- 1**  
Before installation visually inspect for damage.
- 2**  
An impact of the concrete from high altitude or high pressure directly on the component is to be avoided when setting in concrete.
- 3**  
When placing the sleeves in the formwork, ensure that there is sufficient concrete coverage (at least 100 mm around the OD sleeve, depending on static specifications, concrete quality and compaction).

### WARNING

Fitting Instructions: PipeX FZH Wall Sleeve closed.

### NOTE

Fitting Instructions: PipeX FZH Wall Sleeve split (The processing instructions for the filler have to be followed.)



Fitting flush with casing or with casing supports



Fix wall sleeve in casing with casing supports



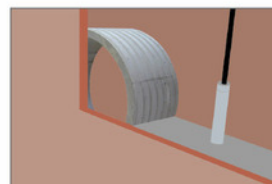
Fixing in steel casing welded with pipe clip (pipe clip on site)



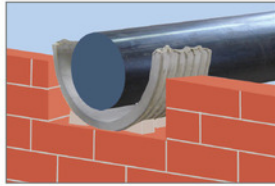
Fitting in floor plate or ceiling



Fitting in brickwork



Thoroughly compress the concrete in the wall sleeve area



Align half casing to the carrier pipe



Fill in completely component B into filler (component A)



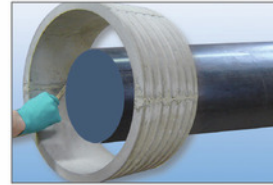
Mix well



Apply filler thickly to both half casings and press in spacer (distance to half casings 5 mm)



Connect half casings for fit until both halves rest on spacers



Distribute filler evenly so that the inner surface forms a homogeneous seal surface, smooth with emery cloth, if necessary