

INSTALLATION



1

The wall opening (PVC sleeve, core drilled hole, steel sleeves....) must be cleaned inside. Please make sure that there is no dirt

2

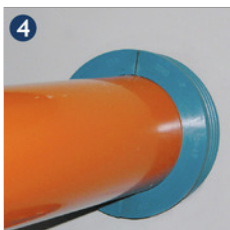
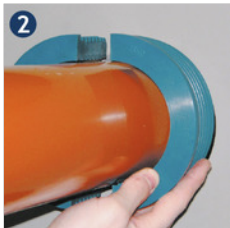
Grease the inside of the wall opening and the outside and inside of the sealing plug with acid free Vaseline. This makes installation much easier and ensures a longer sealing life.

3

Please make sure that the cable or pipe is laying straight and centred in the wall opening. Put the two half shells of the PSI Sealing Plug around the cable or pipe and push the sealing in the opening. Attention: both half shells must be correctly positioned on each other. The plug must be pushed in until the flange touches the wall. Don't push any further!

4

If installation is more difficult (for example with larger plugs) use a piece of wood and a hammer and carefully push in the sea.



NOTE

- Plug can be disassembled only from the backside
- Before installing coredrill, casing pipe dimensions has to be checked, tolerance O.D. max. +1mm
- Plug is not recompressable, Weight of the pipe has to be carried/beared otherwise